



TRAVEL PLAN TO DUBAI



**STEP INTO A WORLD OF LUXURY, ADVENTURE AND ENDLESS POSSIBILITIES—
DUBAI AWAITS**





DUBAI

Dubai is a global metropolis and the most populous city in the United Arab Emirates (UAE) known as a futuristic business and tourism hub. Located on the Persian Gulf, it has transformed from a small fishing settlement into a city of skyscrapers (including the Burj Khalifa) artificial islands and luxury tourism.



VISIT PLACES IN DUBAI

- **ICONIC LANDMARKS & SKYSCRAPERS :-**

BURJ KHALIFA
MUSEUM OF THE FUTURE
DUBAI FRAME
BURJ AL ARAB

- **EXPERIENCES & SIGHTSEEING :-**

DUBAI MALL
PALM JUMEIRAH
DUBAI FOUNTAIN SHOW
DUBAI MIRACLE GARDEN

- **CULTURE & HISTORY :-**

AL FAHIDI HISTORICAL NEIGHBOURHOOD
DUBAI CREEK & SOUKS
JUMEIRAH MOSQUE

- **BEST AREA TO STAY FOR SIGHTSEEIN :-**

DOWNTOWN DUBAI
OLD DUBAI (DEIRA / BUR DUBAI)

- **ADVENTURE & LEISURE :-**

DESERT SAFARI
GLOBAL VILLAGE
DUBAI MARINA & JBR
AURA SKYPOOL





BURJ KHALIFA

The Burj Khalifa in Dubai is the world's tallest building and structure standing at 828 meters (2,717 feet) with 163 floors. Opened in 2010 the mixed use tower features the Armani Hotel, luxury residences, corporate suites and observation decks (At the Top) on levels 124, 125 and 148. Its Y shaped design, inspired by the Hymenocallis flower was designed by Skidmore Owings & Merrill to minimize wind impact.

MUSEUM OF THE FUTURE

The Museum of the Future in Dubai is an iconic elliptical landmark showcasing futuristic technology, space exploration and AI aiming to transport visitors to the year 2071. Located on Sheikh Zayed Road, the seven story, pillarless building features interactive exhibitions, a dedicated children's area and a facade covered in Arabic calligraphy.



DUBAI FRAME

The Dubai Frame located in Zabeel Park is a 150 meter tall 93-meter wide cultural landmark often cited as the "world's largest picture frame". It offers panoramic views of old Dubai to the north and new Dubai to the south serving as a symbolic bridge connecting the city's past, present and future.



BURJ AL ARAB

The Burj Al Arab is an iconic 321 meter luxury hotel in Dubai designed to resemble a billowing sail situated on a man made island 280 meters from Jumeirah beach. Opened in 1999 it is famous for its 198 ultra luxurious duplex suites, 24 karat gold interiors, 24/7 butler service and status as a pioneering "7-star" hotel.



PALM JUMEIRAH

Palm Jumeirah is a world renowned man made archipelago in Dubai UAE shaped like a palm tree. Engineered by Nakheel Properties starting in 2001 using sand and rock, it features luxury villas upscale hotels (including Atlantis, The Palm), beaches and marinas significantly expanding Dubai's coastal tourism. It is recognized for its luxury lifestyle and is visible from space.



DUBAI MALL

Dubai Mall is the world's largest shopping and entertainment destination by total land area featuring over 1,200 retail stores and attracting more than 100 million visitors annually. Located in Downtown Dubai adjacent to the Burj Khalifa, it serves as a massive lifestyle hub with luxury shopping, major attractions and world class dining.

DUBAI FOUNTAIN SHOW

The Dubai Fountain, located on the 30 acre Burj Khalifa Lake in Downtown Dubai is the world's largest choreographed fountain system, featuring water jets shooting up to 45 stories high, 6,600+ superlights and 25 color projectors. Shows run daily every 30 minutes from 6:00 PM to 11:00 PM offering a free, mesmerizing display of light, music and dance.



DUBAI MIRACLE GARDEN

Dubai Miracle Garden is the world's largest natural flower garden located in the Dubailand district. Spanning over 72,000 square metres, it features more than 150 million blooming flowers and 250 million plants arranged in elaborate 2D and 3D designs.





AL FAHIDI HISTORICAL NEIGHBOURHOOD

Al Fahidi Historical Neighbourhood (formerly Bastakiya) is a preserved mid 19th century district in Dubai offering a glimpse into life before modernization. Located along Dubai Creek, it features traditional gypsum and coral stone homes, wind towers (barajeel), art galleries, museums and cafes representing a significant shift from Dubai's modern skyline.

DUBAI CREEK & SOUKS

Dubai Creek is the historic heart of Dubai dividing the city into Bur Dubai and Deira featuring traditional Abra water taxi rides for ~AED 1-2, bustling souks and Al Seef promenade. Key Must-visit souks include the Gold Souk, Spice Souk and Textile Souk offering authentic goods and bargaining opportunities alongside nearby historic sites like the Al Fahidi district.

DOWNTOWN DUBAI

Downtown Dubai is the vibrant luxurious "Centre of Now" and the heart of the city renowned for iconic landmarks high end shopping and premium dining. Developed by Emaar Properties, this central district features the world's tallest tower (Burj Khalifa), the massive Dubai Mall and the choreographed Dubai Fountain. It offers a sophisticated urban lifestyle with excellent transport links.

JUMEIRAH MOSQUE

The Jumeirah Mosque is one of Dubai's most iconic landmarks and is notably one of the few mosques in the city that welcomes non Muslim visitors. Completed in 1979, the mosque was a gift from the late Ruler of Dubai, Sheikh Rashid bin Saeed Al Maktoum to his son the current ruler Sheikh Mohammed bin Rashid Al Maktoum. It is famously depicted on the UAE 500 dirham banknote.





OLD DUBAI (DEIRA / BUR DUBAI)

Old Dubai comprising Deira and Bur Dubai along the Dubai Creek represents the city's historical, cultural and commercial heart. It is characterized by traditional souks (Gold, Spice), bustling trade, affordable living and historic architecture. Key attractions include Abra water taxi rides Al Fahidi Historical District and Meena Bazaar.

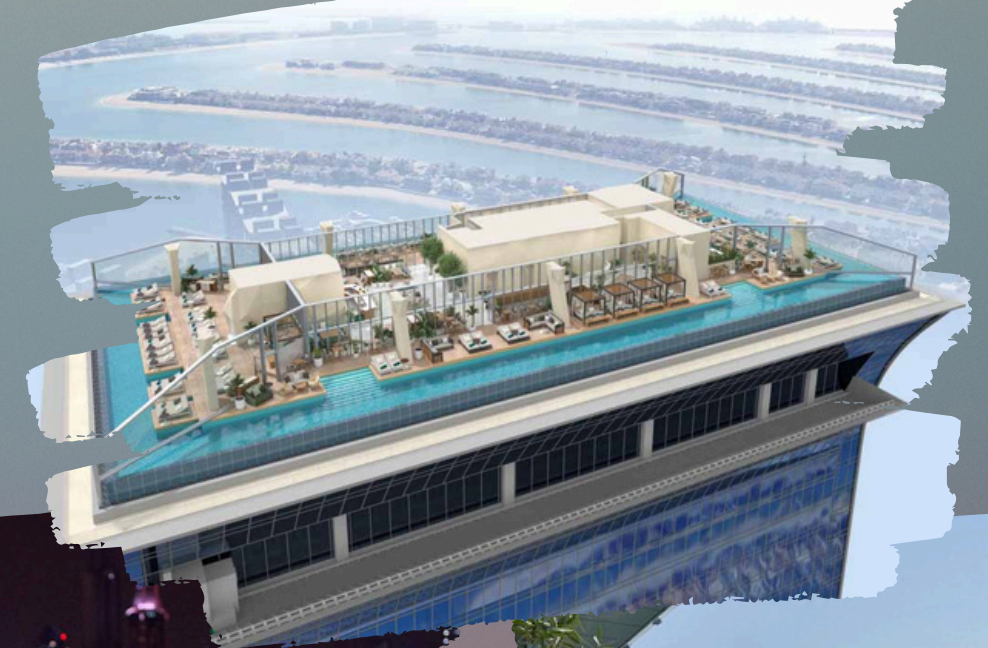


DESERT SAFARI

Dubai desert safaris offer a quintessential Arabian adventure featuring 4x4 dune bashing, camel riding, sandboarding and traditional Bedouin style camp dinners with live entertainment (belly dancing, Tanura show). Popular options include evening, morning, or overnight trips, typically starting with hotel pickup and lasting 3–7 hours.

GLOBAL VILLAGE

Global Village in Dubai is a massive seasonal multi cultural theme park and shopping destination operating from October to May featuring over 90 cultures across various pavilions. It offers international cuisine, shopping, live entertainment and carnival rides. It is considered an affordable family friendly attraction in DubaiLand.



DUBAI MARINA & JBR

Dubai Marina and Jumeirah Beach Residence (JBR) are adjacent premier waterfront communities forming a luxurious hub for dining, shopping and entertainment characterized by a 3-km man made canal, high rise luxury towers and a 1.7-km beachside promenade known as "The Walk". The area is highly walkable, featuring vibrant nightlife, boat tours, water sports and direct beach access at JBR.

AURA SKYPOOL

AURA Skypool Dubai located on the 50th floor of The Palm Tower in Palm Jumeirah is the world's highest 360 degree infinity pool suspended 200 meters in the air. It offers panoramic views of the Dubai skyline, Palm Jumeirah and the Arabian Gulf featuring a luxurious pool deck, lounge and a menu of international dishes.



TURN YOUR DREAM VACATION INTO REALITY IN DAZZLING DUBAI !!!!

THANK YOU !!!!